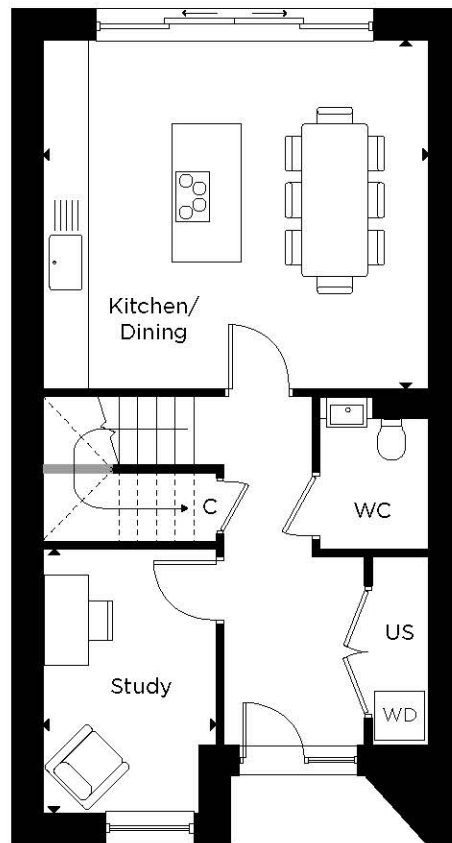
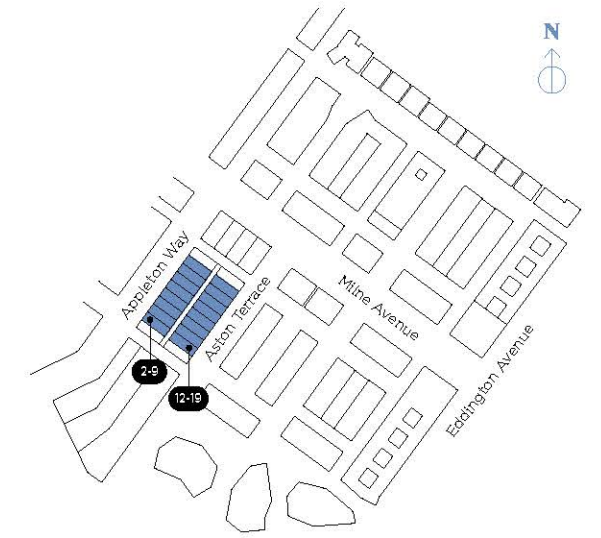




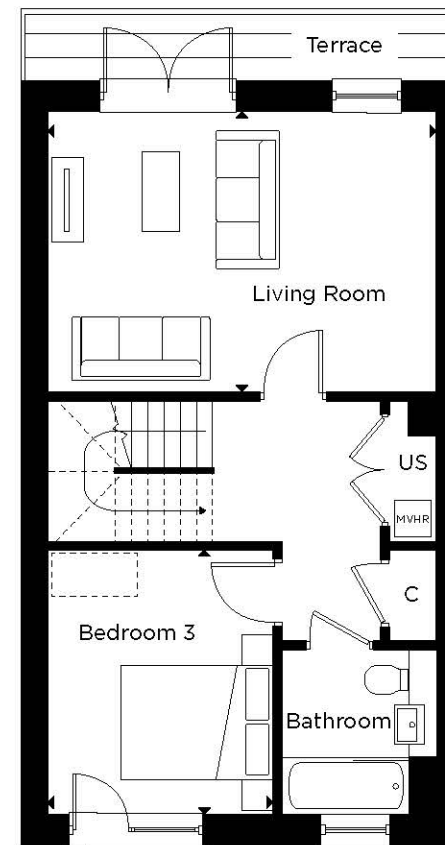
The Morgan A

3 BEDROOM TERRACED
PLOTS 2-9 & 12-19



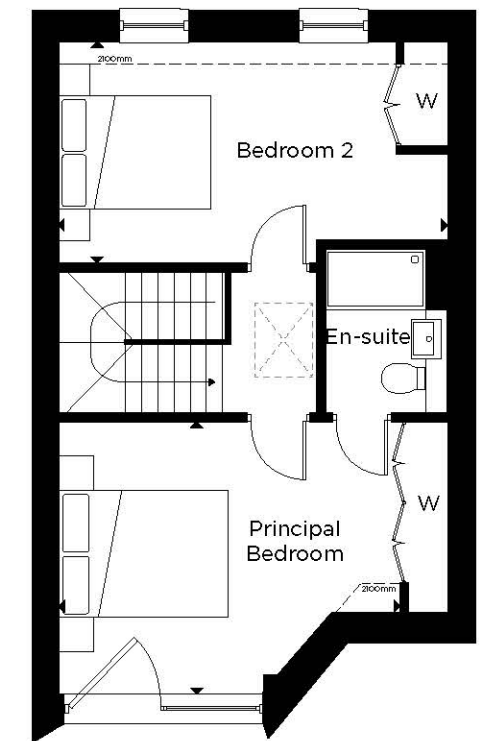
GROUND FLOOR

Kitchen/Dining	5.10m x 4.60m	16'10" x 15'1"
Study	2.30m x 3.45m	7'7" x 11'5"



FIRST FLOOR

Living Room	5.10m x 3.70m	16'10" x 12'2"
Bedroom 3	3.00m x 3.50m	9'10" x 11'5"



SECOND FLOOR

Principal Bedroom	4.55m x 3.50m	14'11" x 11'6"
Bedroom 2	5.10m x 2.90m	16'9" x 9'7"

Floorplan layouts are not to scale, provide approximate measurements only and are subject to planning. Dimensions, which are taken from the indicated points of measurements are for guidance only and are not intended to be used for window treatments or items of furniture. Bathroom and kitchen layouts are indicative only and are subject to change. Wardrobe size and position may vary. The information contained within this document does not constitute part of any offer, contract or warranty. Whilst the plans have been prepared with all due care for convenience of the intending purchaser, the information herein is a preliminary guide only.

C = Cupboard W = Wardrobe US = Utility Store MVHR = MVHR WD = WD ☼ = Skylight
 [] = Indicative wardrobe position ---- = Restricted head height (mm)